

SOLAR HOME LIGHTING SYSTEMS.

| Model No | Application | Duration |
|----------|---|----------|
| HSL-2 | Light: 12V 11W(9W)-2nos | 3-4 Hrs |
| HSL-3 | Light: 12V-11W(9W)-3 Nos | 3-4 Hrs |
| HSL-2A | Light: 12V-11W(9W)-2 Nos, 12V DC fan- 1No | 3-4 Hrs |
| HSL-3A | Light: 12V-11W(9W) -3Nos, 12V DC Fan-1 No | 3-4 Hrs |
| HSL-4 | Light: 12V-11W(9W)-4 Nos | 3-4 Hrs |
| HSL-5B | Light: 12V-11W(9W)-5 Nos, 12V DC Fan-2 Nos | 3-4 Hrs |



SOLAR STREET LIGHTS.

| Spec. | Model-1 | Model-2 | MNES |
|------------|-------------|--------------|--------------|
| SPV Module | 12V/20Wp | 12V/37Wp | 12V/75Wp |
| Battery | 12V/28Ah | 12V/40Ah | 12V/75Ah |
| Lamp | 12V-11W(9W) | 12V-11W | 12V/11W |
| Usage | 8 Hrs | Dusk to Dawn | Dusk to Dawn |
| Autonomy | 1 Day | 1 Day | 3 Days |

SOLAR INVERTERS

| Spec. | HSG-250 | HSG-500 | HSG-1000 |
|------------|---------------|------------------|--------------------|
| Inverter | 250VA | 500VA | 1000VA |
| SPV Module | 12V/75Wp-1 No | 12V/75Wp-2 Nos | 12V/75Wp-4 Nos |
| Battery | 12V/80Ah-1 No | 12V/150Ah- 1 Nos | 12V/ 150 Ah- 2 Nos |
| Usage | 3-4 Hrs | 3-4 Hrs | 3-4 Hrs |
| Autonomy | 1-2 days | 1-2 Days | 1-2 Days |



SOLAR ROAD FLASHERS

- Ideal in accident-prone areas, Ghat sections, School and hospital areas, Construction spots, Road dividers.
- Up to 3 days system autonomy.
- Auto On/Off, Dusk/ Dawn operation.
- All weather proof design.
- Visibility : 500 to 1000 Meters.

Hykon Solar Energy (P) Ltd.

Reg.Off: 1/210A, Avinashi Main Road, Neelambur, Coimbatore-641 062
 Factory: No:15, Dr.Thottam, Valiyapalayam, Kalappatti.P.O, Coimbatore- 641035
 Corp.Off: Hykon House, near M&M, Thrissur- 680001, Kerala
 Regional. Off. : 402 Samarpan, Andheri(E), Mumbai-400 099

Branches :

- | | | | |
|-----------------------------|----------------------------|-------------------------|----------------------------|
| • Thrissur ☎ 2425527 | • Trivandrum ☎ 2440820 | • Chennai ☎ 09382863714 | • Calicut ☎ 2361806 |
| • Cochin ☎ 2381592 | • Kannur ☎ 2707737 | • Kottayam ☎ 2302932 | • Bangalore ☎ 093 41974965 |
| • Coimbatore ☎ 0422-2436381 | • Mangalore ☎ 093 43349898 | • Palakkad ☎ 2528555 | • Trichy ☎ 09345157498 |

Hykon
Powering the Nation

Hykon
Powering the Nation



Solar Street Lights



Solar Home Lighting



Solar Power Plants



Solar Consultancy



Solar Water Heater



National Award 1997

Hykon India (P) Ltd.



ISO-9001:2000

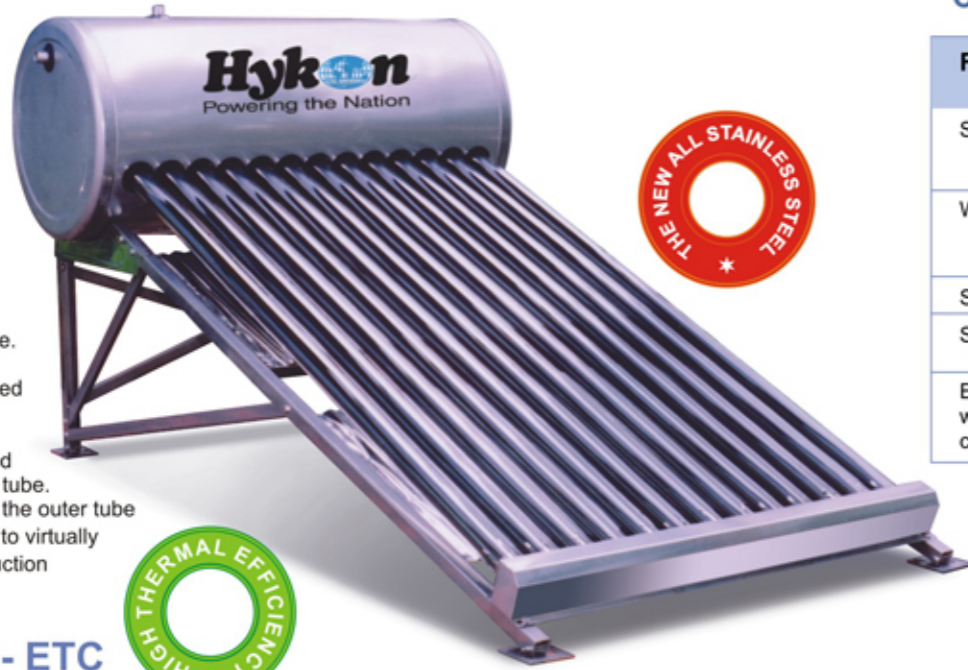
Solar Water Heater

Comparison: Flat plate Vs ETC solar water heaters

| Features | Conventional Flat plate solar heater | HYKON ETC solar water heater |
|------------------------------|---|--|
| Sun tracking | Sun tracking not possible due to flat design. | Auto sun tracking due to circular shape of the vacuum tubes |
| Water quality | Highly susceptible to hard water resulting in loss of efficiency. | Glass tubes of higher diameter. Practically free of scaling effects. |
| Start up time | 4 to 5 hours to heat | Less than 2 hours |
| Space required | Length of approx. 10 ft. | System overall length only 6 feet. |
| Effect of weather conditions | Much lesser or no hot water during rainy / cloudy days | Efficient even in rainy seasons. |

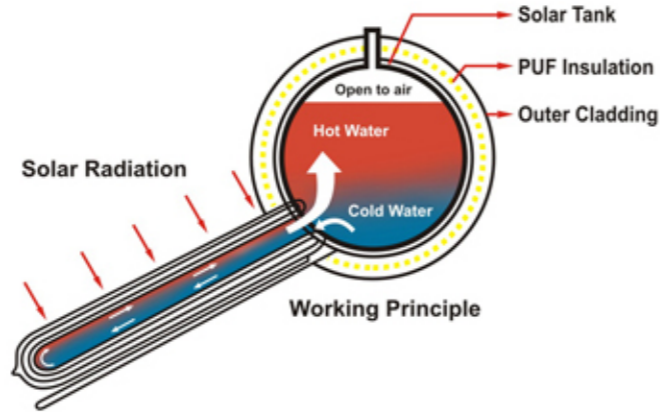
ETC (Evacuated Tube Collector)

All glass-evacuated tubes are the main component of Hykon ETC solar water heater collectors. The evacuated tube consists of two borosilicate glass tube, a glass with high chemical and thermal shock resistance. The outer side of the inner tube is coated with a sputtered solar selective surface. This coated inner tube is closed at one end and sealed at the other end to the outer tube. The annular space between the outer tube and inner tube is evacuated to virtually eliminate heat loss by conduction and convection.



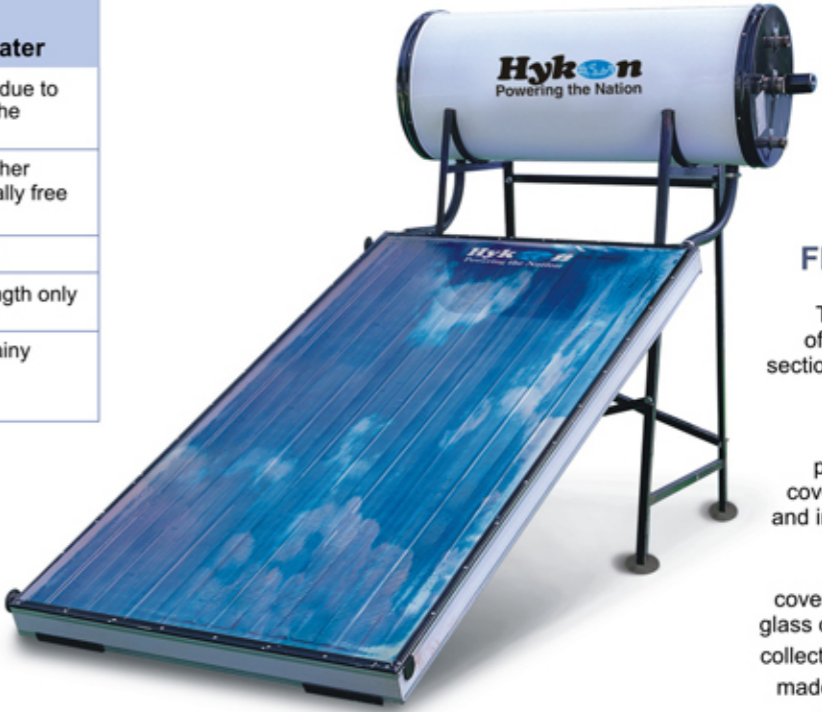
Specifications- ETC Solar Water Heater

| | |
|---------------------------|--|
| System capacity | HE-100/100Liters HE-125/125 Liters HE-200/200 Liters |
| Output water temperature | Max. 80°C |
| Length of tube | 1500 mm |
| Tube material | Borosilicate |
| Absorber | Al/Ni- Al |
| Solar tank material | SS 304 |
| Solar tank outer cladding | SS 304 |
| Frames | Stainless steel |
| Reflector | Stainless steel |
| Auxiliary heating | Provided |
| Tank insulation | PUF |



Application Areas

| | |
|--------|-------------|
| Houses | Restaurants |
| Hotels | Hospitals. |



FPC Flat plate collector

These collectors are made of pure copper-copper solar sections with selective coating. The solar sections are interconnected by header and riser pipes made of pure copper. The sides are covered by aluminium frames and insulated with Rockwool to minimize heat loss. The top of the collector is covered by toughened low iron glass of 4 mm thickness. These collectors are BIS approved and made to suit the rugged Indian climate. The collectors are connected to the solar tank by EPDM rubber tubes.

Save Energy



Specification: FPC Solar Water Heater

| Models | PREMIUM | CLASSIC |
|----------------|---------------|---------------|
| Collectors | BIS certified | BIS certified |
| Insulation | PUF | PUF |
| Solar Tank | SS-304 | SS-304 |
| Outer Cladding | Aluminum | SS-304 |
| Finish | P/Coat | Glossy |

Features.

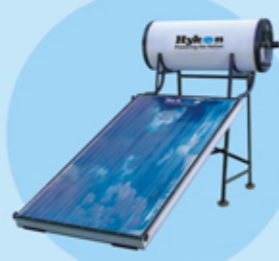
- ♦ Easy to install. ♦ Payback nearly 1 year. ♦ Highly efficient evacuated tubes.
- ♦ Can directly use for cooking purpose. ♦ Higher thermal efficiency. ♦ Better heat retention
- ♦ Less floor space required. ♦ World's latest welding technology.
- ♦ Low start up time of 2 hours.



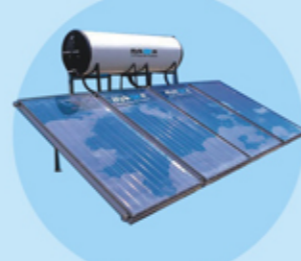
100 L ETC



200 L-ETC



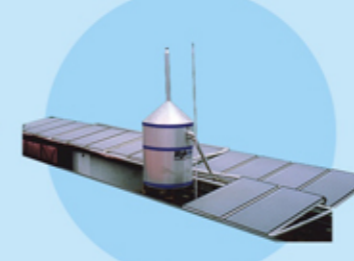
100 L-FP



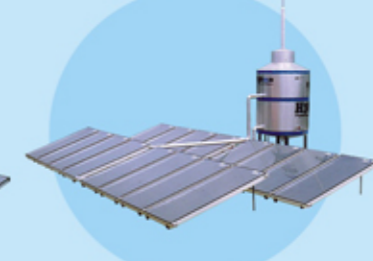
500 L-FP



1000 L-FP



1500 L-FP



2000 L-FP



5000 L-FP